

Report Abuse Next Blog»

Welcome to The Leonardo Blog. Check back often for news and updates on our progress in bringing this science, art, and technology center to Salt Lake City.



THE LEO SOCIAL NETWORK



PREVIOUS POSTS

ARCHIVES

- April 2009
- May 2009
- June 2009
- July 2009
- August 2009
- September 2009
- October 2009
- November 2009
- December 2009
- January 2010
- February 2010
- March 2010
- April 2010
- May 2010
- June 2010
- July 2010
- August 2010

THE LEO NEWSLETTER

Register here to keep up to date on The Leonardo's plans, programs and future.

enter email address...

First name

Last name

FEATURED PROGRAMS 2009



STEM WORKS

This collection of interactive, job-related biotech exhibits travels the greater Salt Lake City metropolitan area.

[Learn More](#)



# Another Language

Wednesday, April 15, 2009

Ever heard of "live, real-time, distributed, surrealistic cinema"?

(We hadn't either.)

We have, however, seen the omission in our lives and are doing our best to rectify it via [Another Language](#), a performing arts company at the [University of Utah](#). Another Language's latest effort, "InterPlay: AnARTomy," fit very nicely with some [familiar themes](#) for The Leonardo.



Dancers Theresa Kulikowski, left, and Patrick Barnes  
All photos by Matthew Loel T. Hepworth

"InterPlay: AnARTomy" features two dancers, poetry, a host of sketch artists, and digital animators, and requires nearly a dozen computer systems to compile live video feeds from four other universities. The video feed of the sketchers and performers in other locations -- Indianapolis, Indiana; Fairbanks, Alaska; Long Island, New York; and Cardiff, Wales -- are projected and "mixed" on a large screen behind the dancers. [InterPlay](#) is the work of Jimmy and Beth Miklavcic.



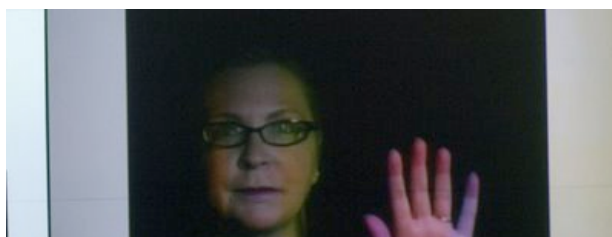


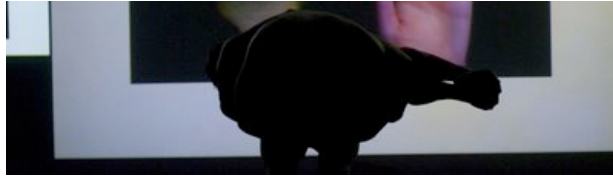
During the year-long development process, the Miklavcics meet with participants via open-source video conferencing software. Then, the "telematic" performance is woven into a multi-leveled, live performance and cinematic work that incorporates feeds from artists, musicians and technicians at [Indiana University-Purdue University Indianapolis \(IUPUI\)](#), [University of Alaska-Fairbanks](#), Long Island University in New York, and [Cardiff University](#) in Wales (full bios of the cast and crew can be found [here](#)). The performance is designed specifically for viewing at the University of Utah Intermountain Network and Scientific Computation Center (INSCC), giving Utah audiences the best seats in the country.



Artists sketching Patrick Barnes

An operator during the performance arranges the screens dependent on what the dancers, animators and artists are doing. Digital MC Jimmy Miklavcic manipulates the relationships between the various performances by combining the video streams into the center digital mix of the display -- all to create a dynamic, collaborative performance. "This thing is so intertwined that calling it art and technology isn't correct because they're so symbiotic in a way," Beth and Jimmy Miklavcic tell us.





Video still of Beth's poetry section

Beth and Jimmy will be giving a presentation about their previous InterPlay project -- Nel Tempo Di Sogno (2007) -- Thursday, April 16, at 1 p.m. at the University of Utah's [Center for High Performance Computing](#). They'll talk about the scene-by-scene tech requirements to pull off an InterPlay performance.

Labels: [art](#), [dance](#), [locals](#), [science](#), [technology](#), [university](#), [video](#)

posted by *The Leonardo* at *4/15/2009 12:02:00 PM* 0 comments

**0 Comments:**

**Post a Comment**

We'd love to hear your comments. If you don't see your posted comment immediately, give us a few minutes to moderate it, and we'll post yours as soon as possible! Thanks!

Comment as:

Subscribe to Post Comments [[Atom](#)]

[<< Home](#)

---

**QUICKLINKS**

About The Leonardo  
The Leo Blog  
News + Events  
The Leo on Facebook  
The Leo on Twitter  
The Leo on Youtube  
The Leo on Flickr  
Body Worlds 3  
Lunch with Leo  
STEM Works: Biotechnology  
Contact Us  
Job Openings

Where we've been  
Exhibit Preview  
Volunteer + Resources

**CONTACT INFORMATION**

(801) 531-9800

Mailing Address:  
P.O. Box 2129  
Salt Lake City, UT 84110

Administrative Office:  
331 South Main Street  
Salt Lake City, UT 84111

