

# another language

performing arts company

Season XXVI

Volume 8 Issue 1

January-March 2011

## Information

*Historical Documentation  
The Artists' Exchange  
1990-1994*



Jennifer Salk Dance Performance

Eighteen Artists' Exchanges involving well over a hundred artists, held over the span of four and a half years at the Another Language Performance Studio in the Artspace Complex are now available at [www.anotherlanguage.org/history](http://www.anotherlanguage.org/history).



Lance Daniels, Charlotte Bell & Katayoun Firouzbakhch Yoga Performance

Presentations are available!

For further information go to

[www.anotherlanguage.org/education/papers](http://www.anotherlanguage.org/education/papers)

Contact Another Language

to have a representative talk with

your organization about scheduling

a presentation.

For Information Call: (801) 531-9419

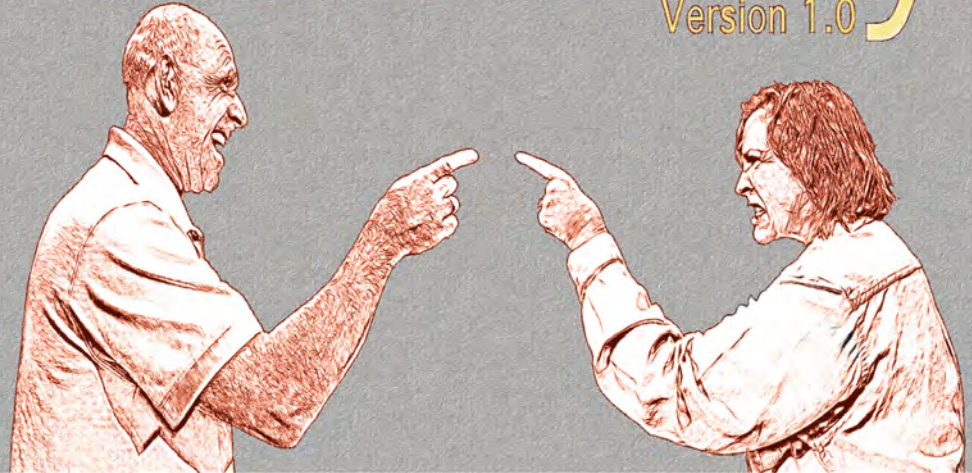
e-mail: [info@anotherlanguage.org](mailto:info@anotherlanguage.org)

[www.anotherlanguage.org](http://www.anotherlanguage.org)

## Spotlight

# Duel•Ality

Version 1.0



Another Language Performing Arts Company invites you to *Duel•Ality*, an upcoming telematic cinema project created and performed by Company Directors

Elizabeth and Jimmy Miklavcic.

This original work deals with concepts of relationships and personal duality.

*Duel•Ality* explores the many sides revealed by the two characters *Duel* (Jimmy Miklavcic), and *Ality* (Elizabeth Miklavcic).

This telematic work focuses on two people and the way this duo encounters and functions in this technological world. It,

***“You cannot expect your computer to be the same day after day. It is almost a living organism, it changes.”*** –*Duel•Ality* Excerpt–

also, looks at the relationship of man and woman, human and computer, software and hardware, the association of live creativity and projected elements, and the connection between creative elements and how the audience perceives them.

## Another Language Board of Directors



### National Advisory Board

**Charles Amirkhania**

Executive Director  
Other Minds Festival  
San Francisco, CA

**Jeff Carpenter**

Multimedia Specialist, NCSA  
Urbana Champaign, IL

**Kent Christensen**

Artist  
New York, NY

**Jennifer Gray**

Graphic Designer  
Thousand Oaks, CA

### Utah Advisory Board

**Pauline Blanchard**

The Pauline Blanchard Trust

**Wayne Bradford**

Systems Administrator  
University of Utah

**Susan Roberts**

Computer Graphics Designer  
Spencer S. Eccles  
Health Sciences Library

### Board of Directors

**Kathy Valburg**

President  
Ice Skating Instructor

**Victoria Rasmussen**

Vice President  
Broad Band Computer Professional

**Sylvia Ring**

Registered OR Nurse

**Jan Abramson**

University of Utah  
Health Sciences

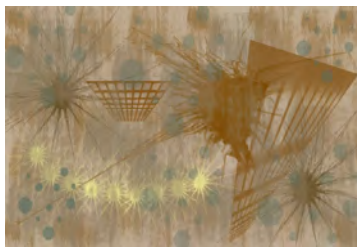
### Staff

**Beth Miklavcic**

Artistic Director

**Jimmy Miklavcic**

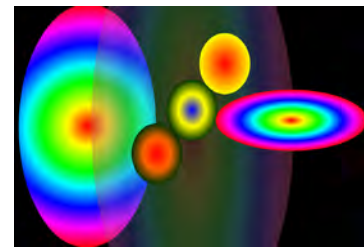
Executive Director



E-painting by Elizabeth Miklavcic  
Projected in Duel•Ality Performance



Jimmy & Elizabeth Miklavcic  
VisLab Black Box Theater



Animation by Elizabeth Miklavcic  
Projected in Duel•Ality Performance

**Who:** Another Language Performing Arts Company  
**What:** Dual•Ality – A Telematic Cinema Performance  
**When:** February 25-26 at 7:00pm and February 27 at 4:00pm  
March 4-5 at 7:00pm and March 6 at 4:00pm  
**Where:** Vislab Black Box Theater  
University of Utah  
Intermountain Network and Scientific Computation Center  
155 South 1452 East #294  
Salt Lake City, Utah  
**Admission:** 7.00 General, 5.00 Seniors & Another Language Members,  
Students from any school with ID - Free Admission  
**Contact:** info@anotherlanguage.org or (801) 531-9419  
**Website:** www.anotherlanguage.org

Dual•Ality performances will be held February 25-26 at 7:00pm, February 27 at 4:00pm, March 4-5 at 7:00pm and March 6 at 4:00pm. The performance space is at the University of Utah Intermountain Networking and Scientific Computation Center and will be in the Visualization Lab Black Box (VisLab) Theater on the second floor, room #294. Tickets are \$7.00 general, \$5.00 for Another Language members and seniors and free for students from any school with current ID. The VisLab seats 15-20 people, so reservations are highly recommended and can be made through the Another Language On-Line Box Office ([www.anotherlanguage.org/store](http://www.anotherlanguage.org/store)); by calling the Another Language Office (801) 531-9419 or emailing [info@anotherlanguage.org](mailto:info@anotherlanguage.org). An audience discussion will follow the half hour performance.

***“In on-line communications...uni-casting is like being in a tunnel all by yourself. There is a fan of singular tunnels expanding throughout the world!”***  
–Duel•Ality Exerpt–

Another Language Performing Arts Company holds a reputation for creating unique, cutting edge work and *Duel•Ality* will continue in the tradition of the unexpected. Be a part of this one of a kind event by attending the University of Utah performances. Information on live streaming viewing options will be available in the Telematic Cinema section of the Another Language Website.

– Elizabeth Miklavcic

# Memberships

## Benefits

<input type="checkbox"/>	FRIENDS	under \$25.00	Membership access to website.
<input type="checkbox"/>	MEMBER	\$25.00-\$49.00	Membership access to website. 2 ticket vouchers. Newsletter. Choice of one 11x14 original print or one DVD. 10% off all admission fees and sale items.
<input type="checkbox"/>	CONTRIBUTOR	\$50.00-\$149.00	Membership access to website. 4 ticket vouchers. Newsletter. Choice of two 11x14 original prints or two DVDs or mix and match. 10% off all admission fees and sale items.
<input type="checkbox"/>	SPONSOR	\$150.00-\$499.00	Membership access to website. 6 ticket vouchers. Newsletter. Choice of three 11x14 original prints and one DVD. 10% off all admission fees and sale items.
<input type="checkbox"/>	PATRON	\$500.00-\$999.00	Membership access to website. 8 ticket vouchers. Newsletter. Choice of four 11x14 original prints and two DVDs. 10% off all admission fees and sale items.
<input type="checkbox"/>	BENEFACTOR	\$1,000 or more	Membership access to website. 10 ticket vouchers. Newsletter. Full set of five 11x14 original prints and all company DVDs. 10% off all admission fees and sale items.



Roses in Vase



Floating Feathers



Winter Forest



Fire and Water



Large Feather

Name: \_\_\_\_\_

Address 1: \_\_\_\_\_

Address 2: \_\_\_\_\_

City: \_\_\_\_\_ State: \_\_\_\_\_ Zip/PostalCode: \_\_\_\_\_

Phone: \_\_\_\_\_ E-mail: \_\_\_\_\_

Pledge amount: \_\_\_\_\_

Thank you for your support!

*Choice of Company DVDs available on Another Language Website.*

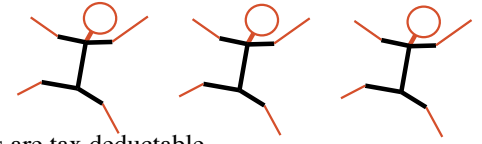
*Another Language is a 501(c)(3) non-profit organization, donations are tax deductible.*

Memberships can be renewed on line at  
<http://www.anotherlanguage.org/sponsors/pledgeform>  
 or  
 Mail checks to:  
**Another Language Performing Arts Company**  
**991 South Windsor Street**  
**Salt Lake City, UT 84105-1335**





# Sponsors



Another Language is a 501(c)(3) non-profit organization, donations are tax deductible.

## Friends & Members:

Janice Abdulian  
Kathy Chamberlain  
Nanette Davila  
Mark Dresser  
Carol Freeman-In Memoria  
Professor Joe Geigel  
Greg Geilman  
Dave & Mary Hanscom  
Eileen Keen  
Hanelle Miklavcic  
Kathy & Darrell Valburg  
Nicola & Rus Whaley  
Jo-Ann Wong

## Contributors:

Jan Abramson  
Wendy Ajax  
Dr. Tanya Johnson Ph.D.  
Deborah & Robert McDermott  
Sylvia Ring  
Suzanne Stensaas

## Sponsors:

Pauline Blanchard  
Barbara & Dave Chamberlain  
Lynn Decker  
Victoria Rasmussen

## Patron:

Kent David Christensen



“Supported by the Utah Arts Council, with funding from the State of Utah and the National Endowment for the Arts, which believes that a great nation deserves great art.”